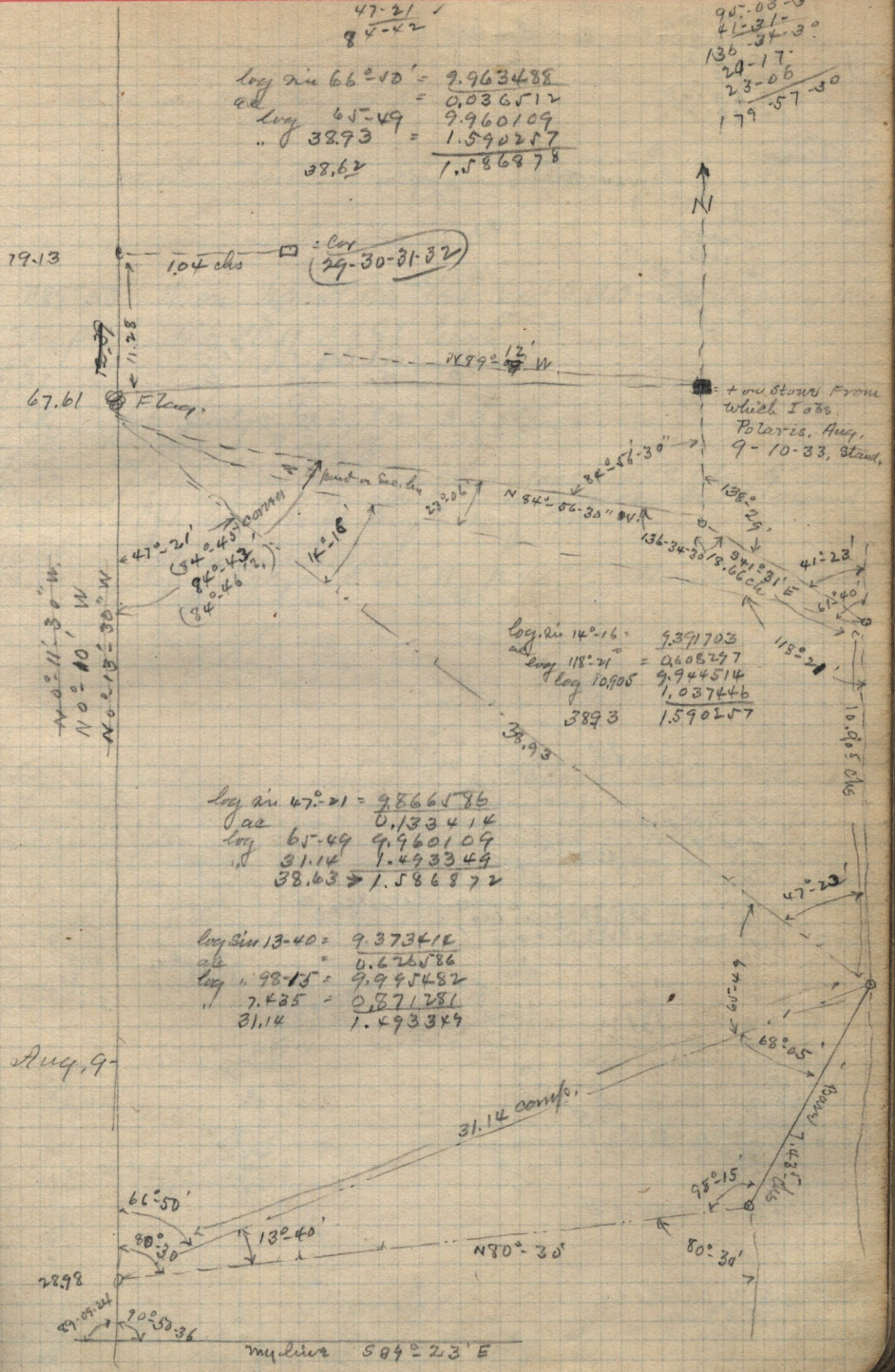


23-06 ✓
 14-16 ✓
 47-21 ✓
 84-42

74-56-30
 90-00-30
 41-31-
 136-34-30
 20-17
 23-06
 179-57-30

log sin 66-50' = 9.963488
 ad
 log 65-49 = 0.036512
 " 38.73 = 9.960109
 38.62 = 1.590257
 1.586878



Cay
 29-30-31-32

+ on Stairs From
 which I see
 Polaris, Aug,
 9-10-33, Bland.

19.13

67.61

104 chs

32.11

N 89° 12' W

47-21

54-45

82-43

84-46

14-16

23.06

N 84° 06' 30" W

136-29

136-34-30

94-31-E

41-23

51-40

N 0° 11' 30" W

N 0° 40' W

N 0° 15' 30" W

log sin 14-16 = 9.391703
 ad
 log 118-21 = 0.608297
 log 10.905 = 9.944514
 38.93 = 1.037446
 1.590257

log sin 47-21 = 9.866576
 ad
 log 65-49 = 0.133414
 log 31.14 = 9.960109
 38.63 = 1.493349
 1.586872

log sin 13-40 = 9.373412
 ad
 log 98-15 = 0.626586
 log 7.435 = 9.995482
 31.14 = 0.871281
 1.493349

Aug. 9

22.98

66-50'

80-30'

132.40'

31.14 comp.

N 80° 30'

95-15'

80-30'

27-09-24

70-50-36

my line S 89° 23' E